



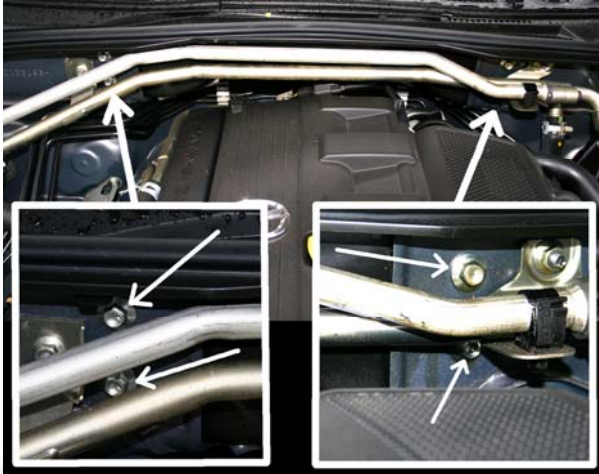
I.L. MOTORSPORT

Installation Instructions

Strutbrace Three Piece NC

NC0-0964

Preparation for installation on vehicles **without** OEM strutbrace (Picture 1/1a)



Picture 1

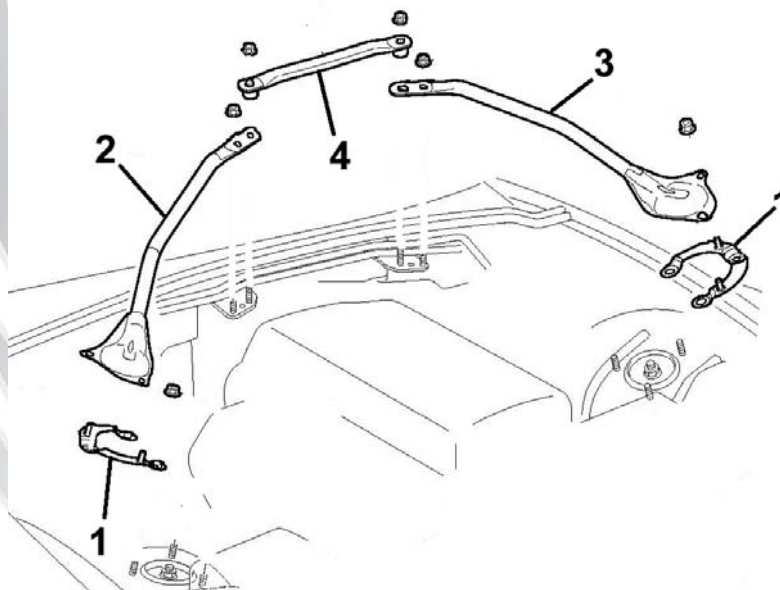


Picture 1a

To install the strutbar in the car it is required to also install the front strut brace mountin bracket. Please loosen the screws in picture 1. The metal piece is extracted and exchanged for the mounting bracket (Picture 1a). Fasten the screws with 7,8 – 11 Nm.

Uninstall the brackets on top of the domes on the right and left side (Picture 2 Pos.1)
You are now ready to install the aluminum strut brace (Picture 3).

Uninstall the OEM strut brace. (Picture 2)



Picture 2

First please remove the short connection rod (Pos.4).
Now remove the two side bars (Pos.2 and 3), and then remove the two brackets on top of the domes (Pos.1)



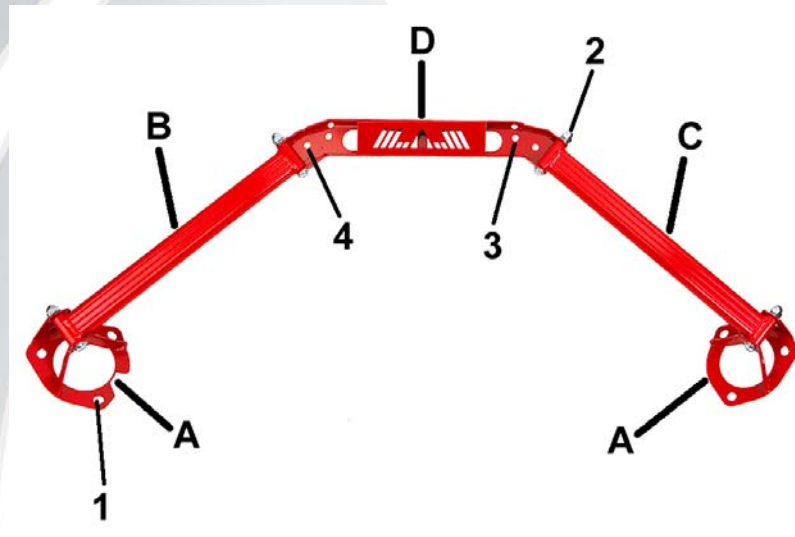
I.L. MOTORSPORT

Installation Instructions

Strutbrace Three Piece

NC0-0964

Installation of the aluminum strut brace (Picture 3)



Picture 3

Position the brackets (A) on the domes and lock them with the OEM nuts.

Install the central connection brace (D) on the threads from the mounting bracket, also do not forget to install the spacer on position 3.

Now you can install the side bars (B und C) and lock them with the supplied screws.

The parts should be fastened / torqued according to the values in the workshop manual.

Torque the screws on position 3 to:

1 → 46,1 – 62,8 Nm

3 → 15,9 – 27,5 Nm

2 → 15,9 – 27,5 Nm

4 → 15,9 – 27,5 Nm